

Research Applications

- Cells/tissues
- Small organisms, nematodes
- Yeast, bacteria, algae

General Features

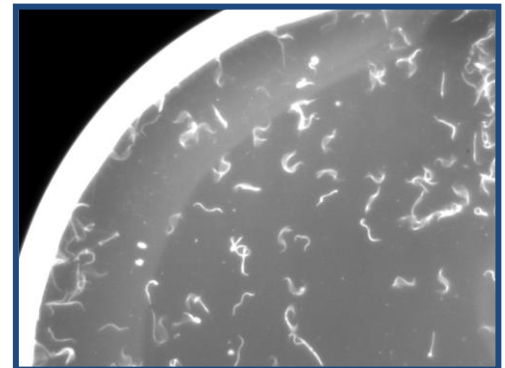
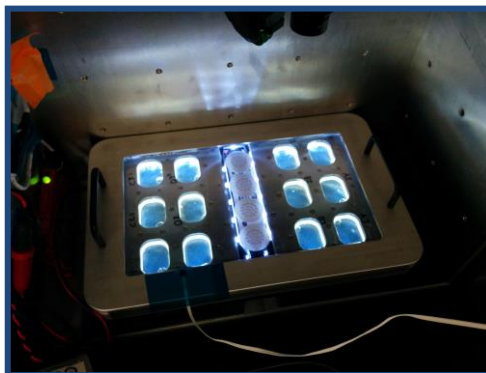
- ScanCam is an automated system that moves a camera in three axes (x, y, z).
- The camera has a rotary axis for maximum coverage of the sample.
- The camera moves to a preset list of points and records HD video clips.
- The current camera is fitted with a 5 megapixel CMOS sensor.
- Resolution of 2560 x 1920 pixels with rolling and global start shutter features.
- The sensor is extremely sensitive and the shutter modes provide ideal parameters that produce sharp, low noise images.
- The camera connects to CGBA via USB2 and can operate at various temperature levels.



x,y,z movement
← capabilities



Imaging bracket with
LED lights for
optimal imaging



For further information, please contact:

Stefanie Countryman, MBA
Business Development Manager
(303) 735-5308
countrym@colorado.edu

Louis Stodieck, Ph.D.
Center Director
(303) 492-1005
stodieck@colorado.edu

BioServe Space Technologies
University of Colorado
429 UCB
Boulder, CO 80309
(303) 492-1005 Tel.
(303) 492-8883 Fax

www.colorado.edu/engineering/BioServe